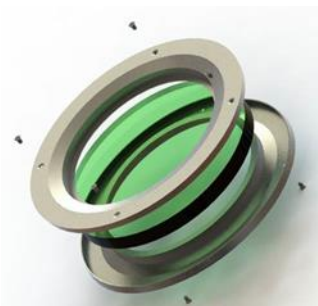


## PRODUCT

# Fire resistant hatches

## GENERAL DESCRIPTION

Hatch specially designed for fire door.



Compact, aesthetically pleasing hatch that allows a visualization in a fire door without its placement influencing the fire resistance of the door.

There are a variety of finishes and different systems that guarantee a fire resistance of 60, 90 and 120 minutes.

### Main functions:

- Display warranty.
- Ease of installation.
- System integrated in the door design.
- Possibility of placement of the systems in different environments.
- Possibility of manufacture in different finishes.

## USE



Residential



Industrial



Institutional  
and Special

Hatch specially designed for fire resistant doors, normally used in homes, businesses, institutional buildings, ... can be used in other facilities, for special needs.

## FEATURES OF PRODUCT



### Fire resistance: Standard EN 1634-1

Fire resistance tests for door and shutter assemblies.  
Part 1: Fire resistance doors and shutter assemblies.

## Products benefits according to laboratory tests:



Cold resistant



Water resistant



Sun resistant



Durability